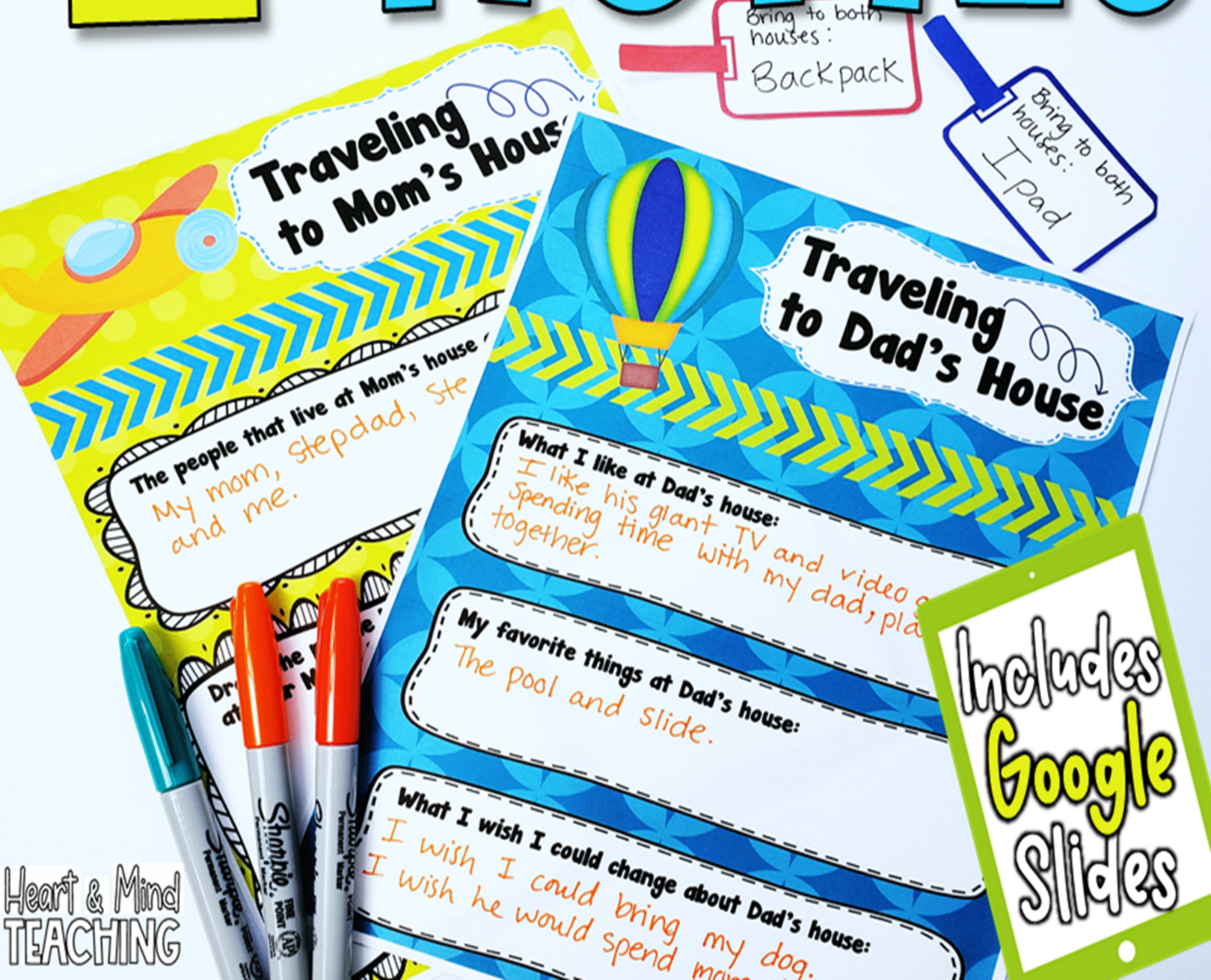
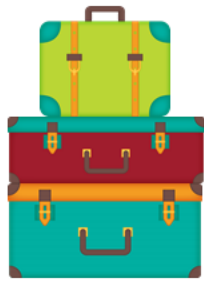


# Traveling between 2 HOMES





# Traveling Between Homes

## Session Objective:

- \*Students will identify pros and cons to living in two different homes.
- \*Students will recognize items they need to bring from home to home.

## Materials:

- \*Pencil
- \*Traveling between homes handouts.

## Guiding Questions:

- \*What are some good things about traveling between homes?
- \*What are some difficult things about traveling between homes?
- \*How can you be responsible for your items to make sure you have them at each house?
- \*Why is it important to try to make living in multiple homes easier?

## ASCA Standards Alignment:

- \*Mindset: Belief in development of whole self, including a healthy balance of mental, social/emotional and physical well-being. (M 1)
- \*Behavior: Self-management skills: Demonstrate ability to assume responsibility (B-SMS 1)
- \*Behavior: Self-management skills: Demonstrate ability to manage transitions and ability to adapt to changing situations and responsibilities. (B-SMS 10)

## SEL Competencies:

- \*Self-awareness: recognizing strengths.
- \*Self-management: self-discipline, organizational skills, stress management.

## Session Details (about 30 minutes)

\*Say "Today, we are going to talk about traveling between homes. Part of going through a divorce is going back and forth from house to house. There are pros and cons to living in two different places. A pro is that you are forced to keep better track of your stuff, but a con is that sometimes you forget something you need." Work together to complete activity pages for Mom and Dad's house. Next, complete the I like/don't like page. Discuss ways to deal with the "don't like" section ideas. Then, complete the "bring to both homes" luggage tags. Tell students to think of these as reminders for what to bring from home to home, since students often struggle to remember these. They can cut them out and keep them in their overnight bag or backpack and pull them out to double check for these items before they leave each home. The last page is a schedule, this could be sent home as homework for students to complete and keep with them so they can always know where they are going each day.





**Traveling  
between**

**HOMES**



**Mom's House**

**Dad's House**



# Traveling to Dad's House

**What I like at Dad's house:**

**My favorite things at Dad's house:**

**What I wish I could change about Dad's house:**



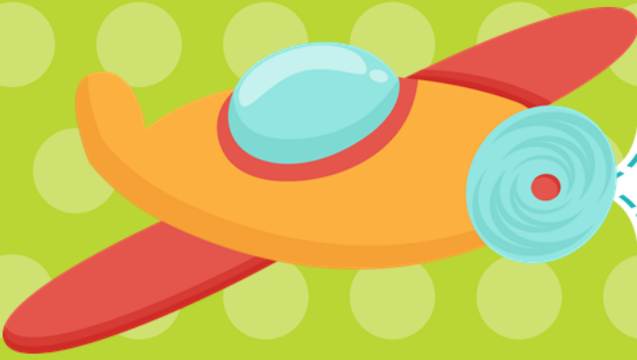


# Traveling to Dad's House

**The people that live at Dad's house are:**

**Draw the people living  
at your dad's house:**

**Draw what your Dad's  
house looks like:**



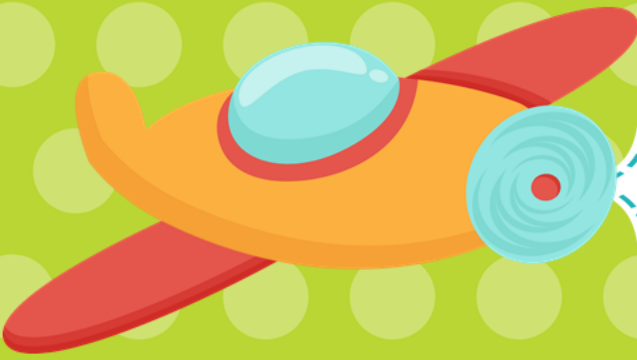
# Traveling to Mom's House

**What I like at Mom's house:**

**My favorite things at Mom's house:**

**What I wish I could change about Mom's house:**






# Traveling to Mom's House

**The people that live at Mom's house are:**

**Draw the people living  
at your Mom's house:**

**Draw what your Mom's  
house looks like:**



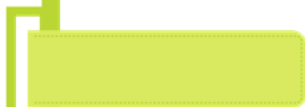
**What I  
DON'T  
like  
about  
living in  
2 homes**



**What I  
DO  
like  
about  
living in  
2 homes**



# Must have items to bring to both homes

An empty rounded rectangular box with a purple border.An empty rounded rectangular box with a purple border.An empty rounded rectangular box with a green border.An empty rounded rectangular box with a green border.An empty rounded rectangular box with an orange border.An empty rounded rectangular box with an orange border.An empty rounded rectangular box with a red border.An empty rounded rectangular box with a red border.

# My Travel Schedule



## Week 1

Sunday	
Monday	
Tuesday	
Wednesday	
Thursday	
Friday	
Saturday	

## Week 2

Sunday	
Monday	
Tuesday	
Wednesday	
Thursday	
Friday	
Saturday	

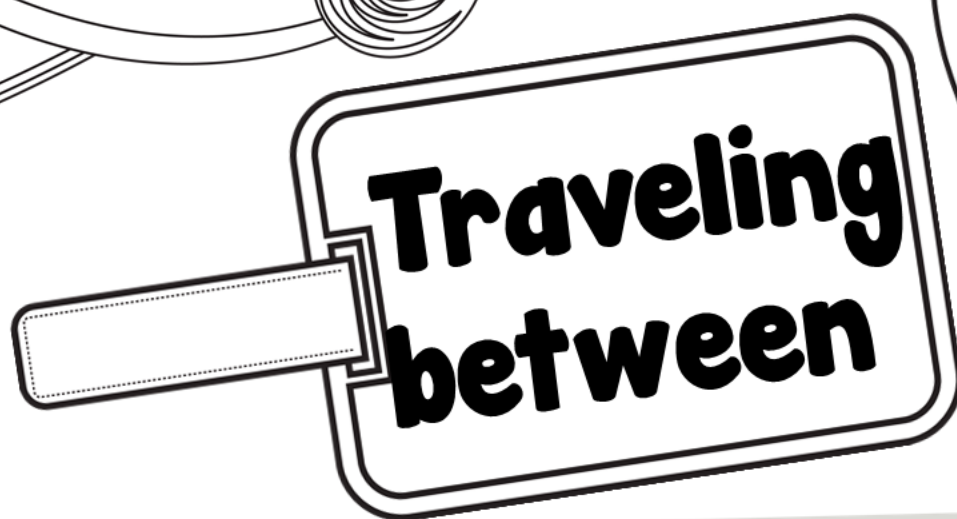
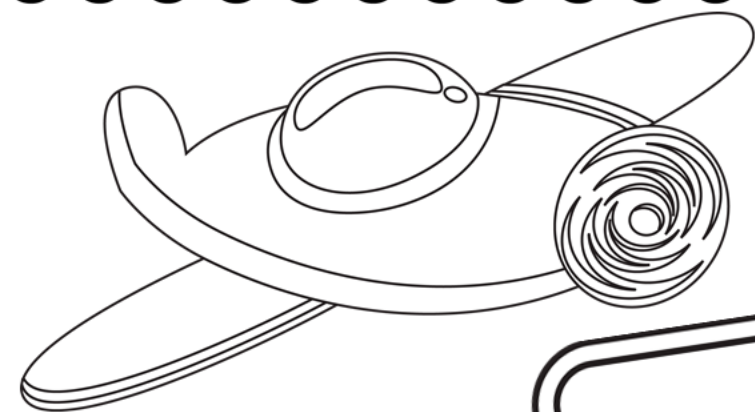
## Week 3

Sunday	
Monday	
Tuesday	
Wednesday	
Thursday	
Friday	
Saturday	

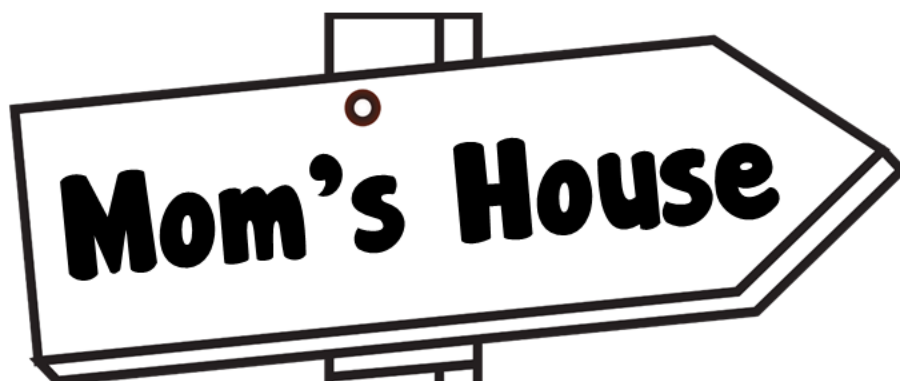
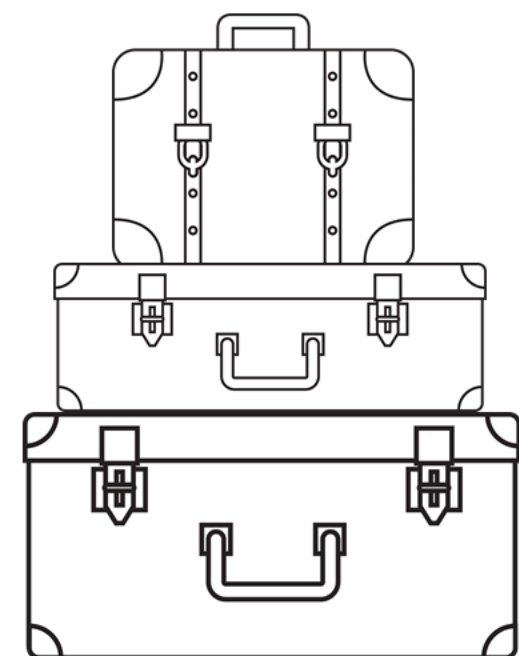
## Week 4

Sunday	
Monday	
Tuesday	
Wednesday	
Thursday	
Friday	
Saturday	





# HOMES





# Traveling to Dad's House

**What I like at Dad's house:**

**My favorite things at Dad's house:**

**What I wish I could change about Dad's house:**



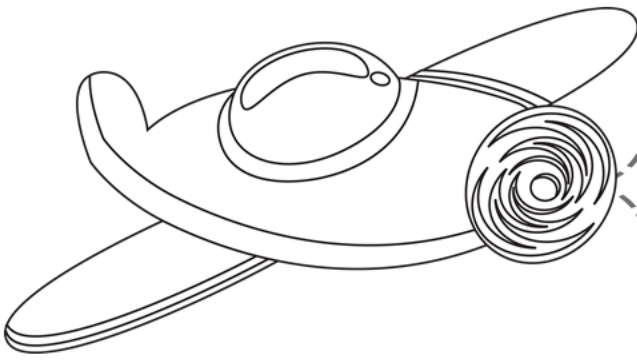


# Traveling to Dad's House

**The people that live at Dad's house are:**

**Draw the people living  
at your dad's house:**

**Draw what your Dad's  
house looks like:**



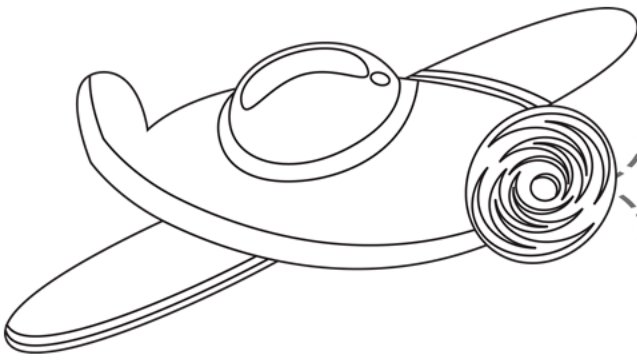
# Traveling to Mom's House



**What I like at Mom's house:**

**My favorite things at Mom's house:**

**What I wish I could change about Mom's house:**



# Traveling to Mom's House

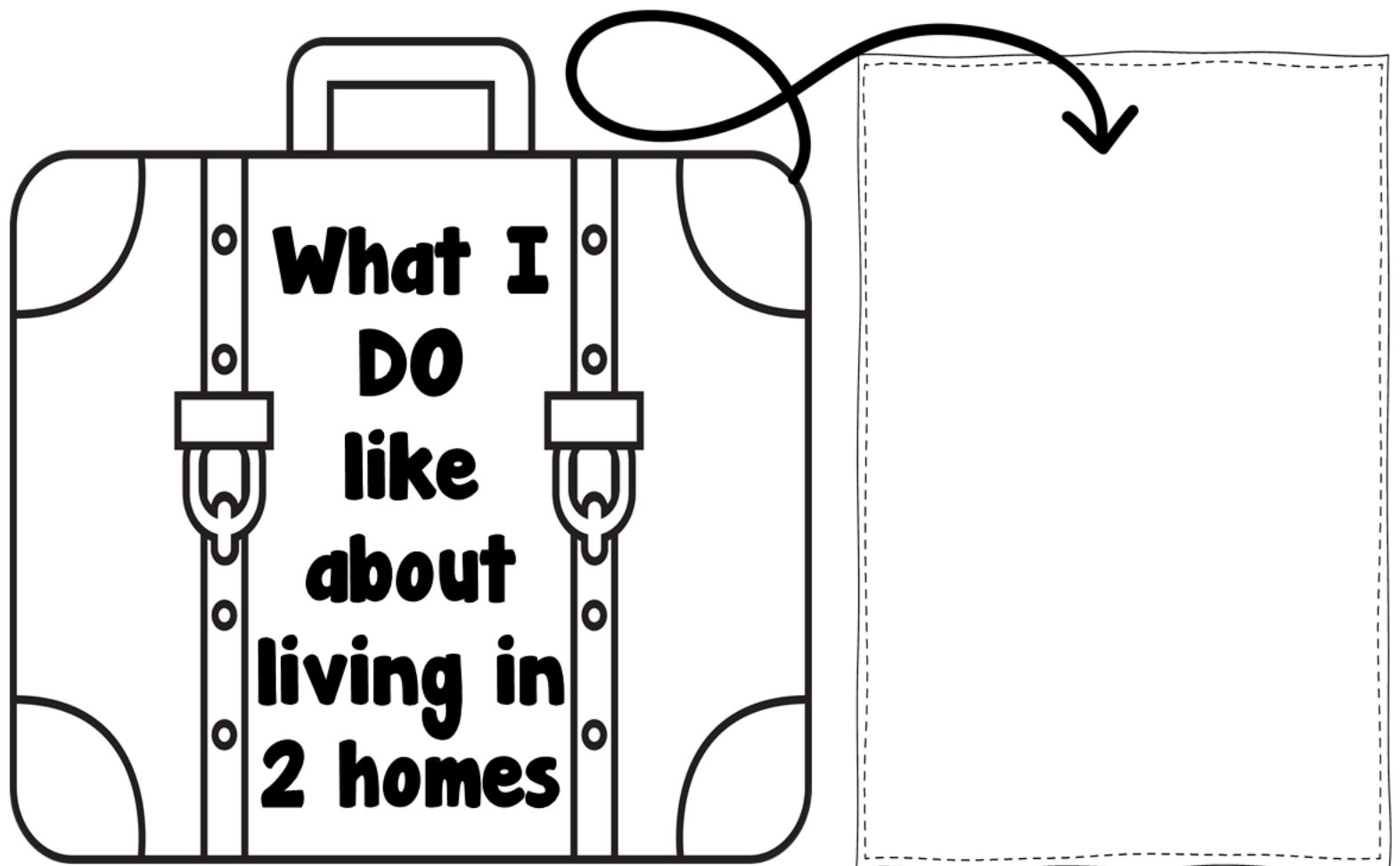
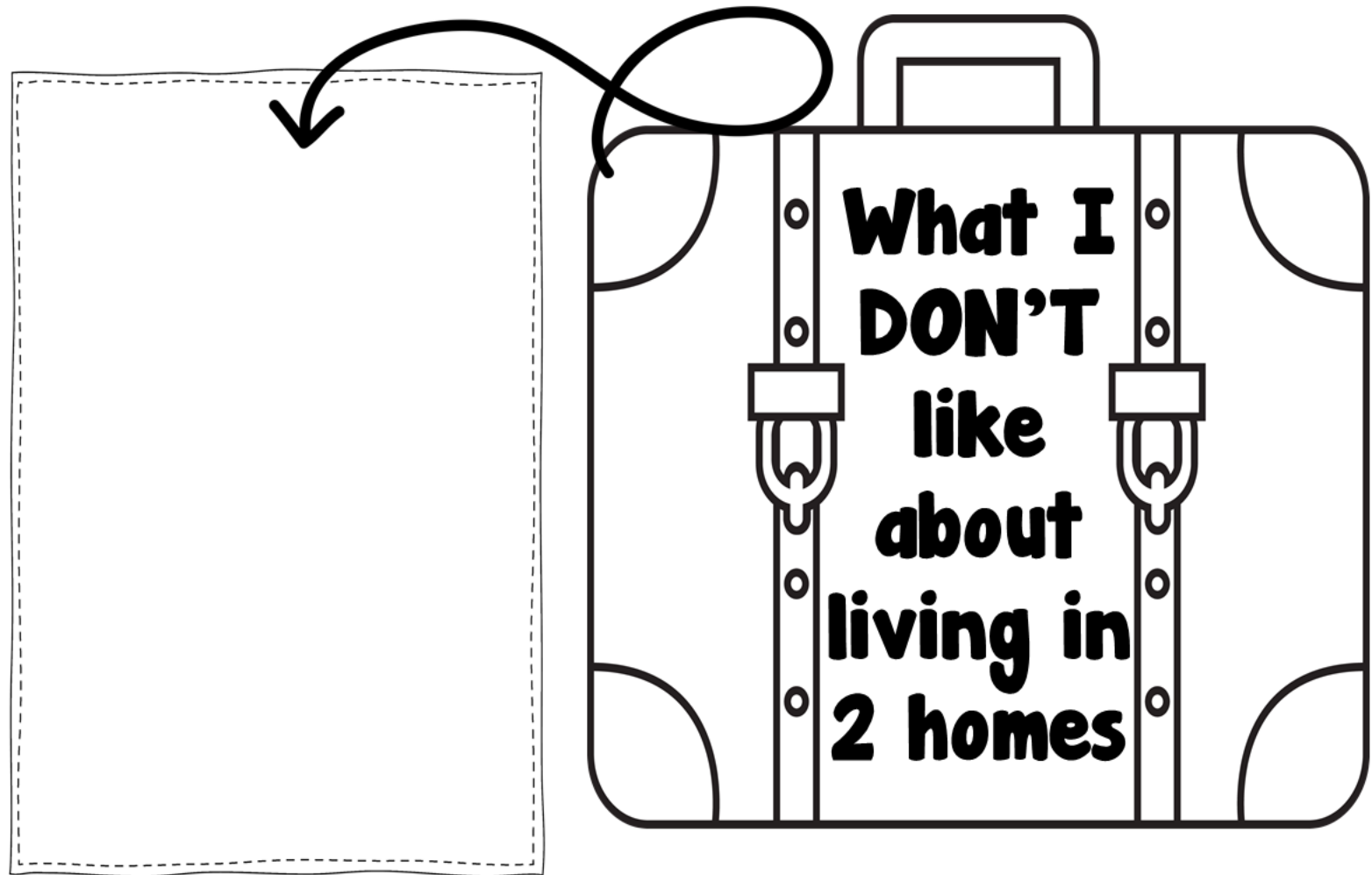


**The people that live at Mom's house are:**

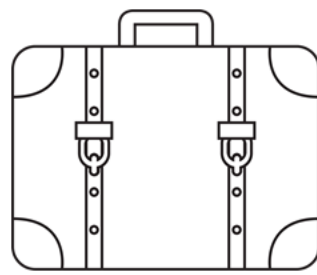
**Draw the people living  
at your Mom's house:**

**Draw what your Mom's  
house looks like:**

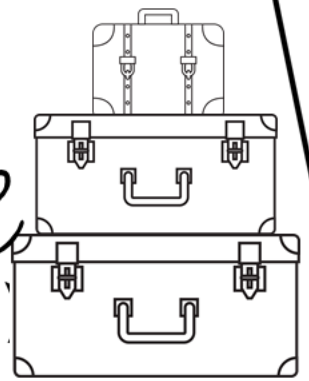




# Must have items to bring to both homes

A large, empty rectangular box with rounded corners and a double-line border, intended for listing items.A small, horizontal rectangular box with a dashed line inside and a double-line border, intended for labeling.A large, empty rectangular box with rounded corners and a double-line border, intended for listing items.A small, horizontal rectangular box with a dashed line inside and a double-line border, intended for labeling.A large, empty rectangular box with rounded corners and a double-line border, intended for listing items.A small, horizontal rectangular box with a dashed line inside and a double-line border, intended for labeling.A large, empty rectangular box with rounded corners and a double-line border, intended for listing items.A small, horizontal rectangular box with a dashed line inside and a double-line border, intended for labeling.A large, empty rectangular box with rounded corners and a double-line border, intended for listing items.A small, horizontal rectangular box with a dashed line inside and a double-line border, intended for labeling.A large, empty rectangular box with rounded corners and a double-line border, intended for listing items.A small, horizontal rectangular box with a dashed line inside and a double-line border, intended for labeling.A large, empty rectangular box with rounded corners and a double-line border, intended for listing items.A small, horizontal rectangular box with a dashed line inside and a double-line border, intended for labeling.A large, empty rectangular box with rounded corners and a double-line border, intended for listing items.A small, horizontal rectangular box with a dashed line inside and a double-line border, intended for labeling.

# My Travel Schedule



## Week 1

Sunday	
Monday	
Tuesday	
Wednesday	
Thursday	
Friday	
Saturday	

## Week 2

Sunday	
Monday	
Tuesday	
Wednesday	
Thursday	
Friday	
Saturday	

## Week 3

Sunday	
Monday	
Tuesday	
Wednesday	
Thursday	
Friday	
Saturday	

## Week 4

Sunday	
Monday	
Tuesday	
Wednesday	
Thursday	
Friday	
Saturday	

# GOOGLE CLASSROOM

Your resource comes with a digital version for use in Google Slides via Google Classroom. Follow these steps to upload your resource.

1

Click on the link you want



[Traveling between Homes](#)  
[Traveling between Homes Editable Version](#)

2

You will be prompted to make a copy of the resource. Click on the blue box that says "Make a copy" and the resource will go directly into your Google drive.

Google Drive

Copy document

Would you like to make a copy of Career Interest Inventory?

Make a copy



3

Go to your Google Drive and locate the copy of the file. You can rename the file at this point or add/delete slides.

4

Next, go to your Google Classroom and add an assignment. Select the Google Drive Symbol and select the resource you want to assign.

5

From here, you should see a grey box that says "Students can view file." Click the grey box. A dropdown menu should appear. Select, "Make a copy for each student."

**YOU HAVE TO MAKE A COPY FOR EACH STUDENT!**

Otherwise they will all be editing the same file.

Click "Assign" in the top right corner if you're ready to post!

This product is meant to be used in "edit" mode (not "presentation" mode). Edit mode is the only mode that allows drag & drop and writing in text boxes.

Helpful links for using Google Classroom:

[Teacher Tips for using Google Classroom \(TPT blog\)](#)

[Getting Started with Google Classroom \(youtube video\)](#)





**Thank you for supporting my little shop!**

Hi there! I'm Ashley- a School Counselor, curriculum developer, blogger, and mama to two young boys. I have a passion for creating fun and engaging resources for Counseling and Social Emotional Learning.

Access my  
Freebie Library



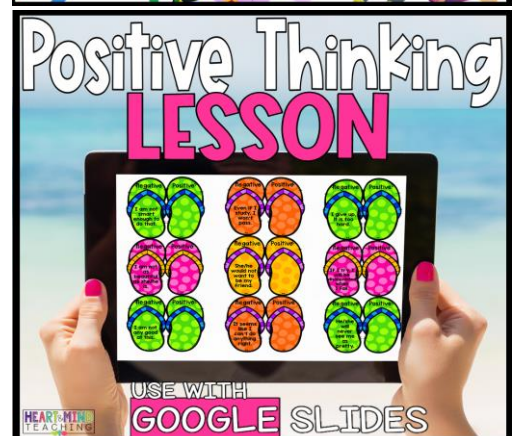
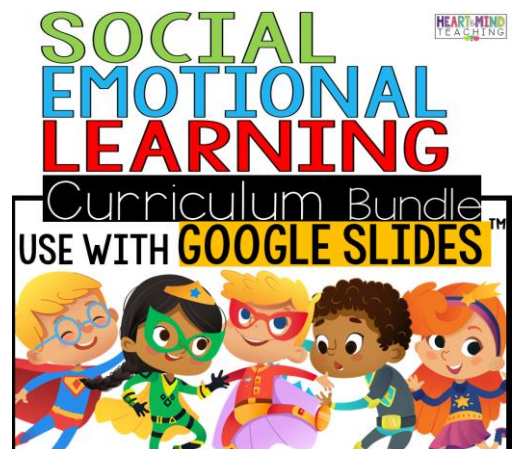
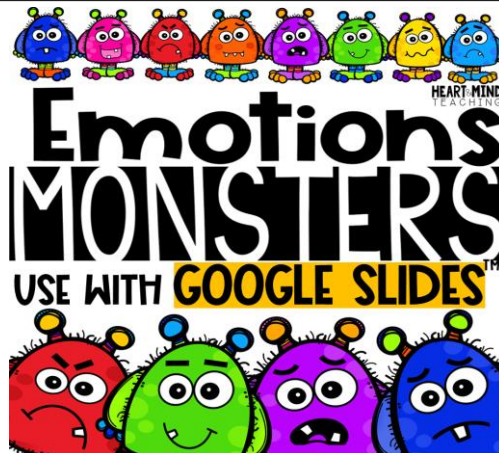
**FOLLOW FOR EXCLUSIVE SAVINGS**

New products are 50% off for 24hrs.

➡ **CLICK HERE** ⬅

C H E C K   T H I S   O U T

This resource  
and 8 others  
are included in  
this Curriculum



# TERMS OF USE

© Heart and Mind Teaching, 2021. All rights reserved. Purchase of this item entitles the purchaser the right to reproduce for classroom, personal, and google classroom use only. Use in multiple classrooms, requires the purchase of additional licenses. Redistribution or duplication of this product is strictly forbidden without the written permission of the publisher. Copying any part of this product and placing it on a publicly accessible website is strictly forbidden and is a violation of the Digital Millennium Copyright Act (DMCA). You may post this for single-classroom use on a password protected student site such as google classroom. **You may NOT post my products on any public, for-profit, or commercial websites or entities, such as Outschool.** Please do not sell or distribute any part of this as your own. Thank you for abiding by universally accepted codes of professional ethics while using this product.

Questions or Concerns?

Please reach out to me at:

[heartandmindteaching@gmail.com](mailto:heartandmindteaching@gmail.com)



## CREDITS



[Gayle McGlaulin](#)